

New Product Summary

Launch Date – 2nd July 2007
Under NDA Until – 1st June 2007

Epson
EMP X52

The multimedia partner that brings the big screen to work and home

The versatile Epson EMP-X52 multimedia projector gives a professional performance at work and at home. Outstanding for business or education presentations, but just as happy bringing big screen entertainment to your living room.

You choose – it's always ready to go

With one of the quickest start-up times on the market, this projector will turn on in just 5 seconds. Afterwards you can turn off, disconnect the power cable and be ready to move straight away.

You choose – it's so adaptable

After a quick, simple set up, you can rely on a perfect, uniform image from a wide range of positions, thanks to a large 30° vertical keystone correction angle. And it's great in smaller rooms too - a 60" image can be created just 1.8m from the screen.

You choose – it's so easy

This projector is designed for simple operation. The convenient, intuitive control panel gives you quick access to a range of information in key areas including power, status, adjustments, controls and a comprehensive help function.

You choose – it's brighter and better

Epson's long life, low wattage 'E-TORL' lamp is smaller and more efficient without compromising brightness and lasts for up to 4000 hours. This projector is quiet too - at just 28dB sound level, your audience will always be concentrating on your presentation.

You choose – it's up to you

With the Epson projectors, you're always in control. Password protection offers security, and a lockable control panel means if you have the remote, you have complete control.

Big screen home entertainment

You choose – it's your lifestyle

Whatever you choose to give the big screen treatment, from photos and movies to sports and video games, the 7 preset colour modes ensure excellent colour every time. And with the black and white enhancer, you'll see every detail even on dark or bright images.

You choose – it's the big screen solution

You can even create a genuine movie experience. Simply change the aspect of the screen from 4:3 format to 16:9 – just like a real cinema!

Entry level value, top level features.

For business presentations

- Compact and light, simple to set up and operate
- Enjoy unbeatable quality with Epson 3LCD technology
- Keep on the move with Quick Start, Instant Off
- AV mute slide for more effective presentations

For home entertainment

- Choose from 7 colour modes to optimise quality
- Add the cinema experience to your home with the 16:9 viewing format
- A true multimedia partner – from computers to gaming and DVD player to digital cameras
- Place the projector off centre with no distortion



3LCD
E-TORL

Remote control

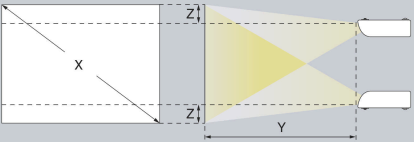


Ordering information

Description	EMP- X52 LCD Projector
Part Number	V11H254140DA
Barcode	8715946390345
Carton Dimensions	427x379x182mm
Carton Weight	net= 2.7kg; gross=5.3kg

Screen size and projection distance

Use the Epson Projection Distance Calculator software available from www.epson.co.uk for distances and screen sizes not shown below.



4:3 Screen size	Shortest (Wide)	Longest (Tele)	Vertical distance from center of lens to bottom edge of screen
X (screen size / dimension)	Y (cm / inch)		Z (cm / inch)
30" / 61 cm x 46 cm 24.0" x 18.1"	87 / 34	119 / 47	4 / 1.7
40" / 81 cm x 61 cm 31.9" x 24.0"	117 / 46	159 / 63	6 / 2.3
60" / 120 cm x 90 cm 47.2" x 35.4"	177 / 70	240 / 95	9 / 3.4
80" / 160 cm x 120 cm 63.0" x 47.2"	237 / 93	321 / 126	12 / 4.5
100" / 200 cm x 150 cm 78.7" x 59.1"	297 / 117	402 / 158	14 / 5.7
200" / 410 cm x 300 cm 161.4" x 118.1"	597 / 235	807 / 318	29 / 11.3
300" / 610 cm x 460 cm 240.2" x 181.1"	897 / 353	1212 / 477	43 / 17.0

Accessories

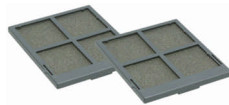
(Model code) **order code**

Consumables

Spare Lamp (ELPLP41)
V13H010L41



Air Filter Set (ELPAF13)
V13H134A13



Screens

50" Portable Screen (ELPSC06)
V12H002S06



60" Portable Screen (ELPSC07)
V12H002S07



80" Portable Screen (ELPSC08)
V12H002S08

Mountings

Ceiling Plate (ELPFC03)
Required if using a ceiling pipe.
V12H003C03



Ceiling Pipe (silver) 370mm
(ELPFP04)
V12H003P04



Ceiling Pipe (silver) 570mm
(ELPFP05)
V12H003P05

Ceiling Pipe (silver) 770mm
(ELPFP06)
V12H003P06

Ceiling Mount (ELPMB18)
Connects to the projector and either directly to the ceiling, or to a ceiling pipe.
V12H003B18



Cables

VGA Computer Cable HD-15 to HD-15 1.8m (ELPKC02)
V12H005C02



VGA Computer Cable HD-15 to HD-15 3.0m (ELPKC09)
V12H005C09

VGA Computer Cable HD-15 to HD-15 20m (ELPKC10)
V12H005C10

Component Video Cable (ELPKC19)
V12H005C19



HD-TV Cable (ELPKC22)
V12H005C22



What's in the Box?

Projector
with Slide Lens Shutter



Remote Control



2 x AAA alkali batteries
for the remote control



Power Cable
1.8m cable



Computer Cable
Mini D-Sub 15-pin/mini D-Sub 15-pin, 1.8 m (6 ft.)
Use when projecting images from a computer



Read This First Booklet
Explains the contents of the box and which manuals the user should refer to.

Image TBC

Setup Guide
Contains information on basic operations for preparing the projector before use (setup and connecting video equipment or a computer) and for starting projection.

Image TBC

Document CD-ROM
Contains information on common and useful functions, configuration, troubleshooting, and maintenance.

Image TBC

Safety Instructions
/ World Wide Warranty Terms

image TBC

Specifications

MODEL	EMP-X52	
Projection System	RGB liquid crystal shutter projection system	
Projection Method	Front / Rear / Ceiling mount	
Specifications of Main Parts		
LCD	Size	0.63-inch without MLA
	Driving Method	Poly-silicon TFT active matrix
	Pixel Number	786,432 dots (1024 x 768) x 3
	Native Resolution	XGA
	Aspect Ratio	4:3
	Pixel Arrangement	Cross stripe
	Refresh Rate	50 Hz - 60 Hz
Projection Lens	Type	Manual zoom / Manual focus
	F-Number	1.6-1.74
	Focal Length	18.4 mm-22.12 mm
	Zoom Ratio	Optical Zoom1-1.2
	Lens Cover	Slide lens shutter
Lamp	Type	170 W UHE
	Life	3000 hours (High bright) / 4000 hours (Low bright)
Screen Size (Projected Distance)	30" to 300" [1.01 to 10.42 m] (Zoom:Tele) 30" to 300" [0.84 to 8.66 m] (Zoom:Wide) 60" screen 1.7 - 2.1 m	
Brightness	2000 ANSI lumens (Colour mode: Game, Zoom: Wide)	
High Brightness Mode	1600 ANSI lumens (Colour mode: Game, Zoom: Wide)	
Low Brightness Mode		
Contrast	400:1 (Colour mode : Game, High brightness mode)	
Brightness Uniformity	90%	
Colour Reproduction	Full-colour (16.77 million colours)	
Video Quality	Simple Interface-Progressive conversion	
Sound Output	1 W Monaural	
Speaker	35 • x20 • x1	
Function	User logo, A/V mute, Freeze, E-Zoom, Help	
Colour Mode	PC: Photo, Presentation, Theatre, Game, sRGB, Blackboard, Text Video: Sports, Presentation, Theatre, Game, sRGB, Blackboard, Text	
Remote Control Infrared Receiver Position / Distance / Directivity	Front & rear , 6 m Right / Left : -30 to +30 degrees Upper / Lower : -15 to +15 degrees	
Effective Scanning Frequency Range (Analogue)	13.5 MHz to 162 MHz up to UXGA 60 Hz 15 kHz to 92 kHz	
Pixel Clock	Horizontal Vertical 50 Hz to 85 Hz	
Adjustment Function Projector / Remote Control	Brightness / Contrast / Tint / Saturation / Sharpness / Input signal / Sync / Tracking / Position / Colour temperature / Volume / etc.	
Foot Adjuster	Front-centre 0 to 11 degrees	
Tilt Angle	Vertical : PC -30 to +30 degrees	
Keystone Correction	Yes (foot type , 0 to 11 degrees)	
Auto Keystone Correction	Yes	
Source Search	Yes	
Auto Detection of RGB/Component Operation Panel	Yes	
Protected Function	Yes	
Password Protected Function (Security Function)	Yes (Protection of User logo)	
Analogue RGB I/O	Display	Native 1024 x 768 dots
Performance	Input Signal	Signal Type Separate signal Video Signal Analogue (0.7 Vp-p, 75 ohm / Mac 0.714 Vp-p, 75 ohm) Sync. Signal Separate (positive & negative, bi-polarity 2-5 Vp-p)/ Composite (positive & negative, bi-polarity 2-5 Vp-p)/ Sync-on-green (negative, 0.3 Vp-p)
Input Terminal	Audio Signal	500 mVrms / 47 k-ohm
	Video	D-sub 15pin x 1 Blue moulding
	Audio	RCA x 1 (White/Red)
Output Signal	Video Signal	Analogue (0.7 Vp-p, 75 ohm / Mac 0.714 Vp-p, 75 ohm) Sync. Signal Separate (positive & negative, TTL) / Composite (positive & negative, TTL) / Sync. on green (negative 0.2-0.4 Vp-p)
Output Terminal	Video	D-sub 15pin x 1 Black

Video I/O	moulding(Output signal : Computer * only)	
Display Performance	NTSC: 560 lines, PAL: 560 lines (Depend on observation of the multi-burst pattern)	
Input Signal	Video Standard	NTSC / NTSC4.43 / PAL / M-PAL / N-PAL / PAL60 / SECAM
	Video Signal	Composite Video (1.0 Vp-p / Sync.negative, 75 ohm) / S-Video (Luminous 0.714 Vp-p, Chrominous 0.286 Vp-p, 75 ohm) / Component Video (Analogue Y level 0.7 V, 75 ohm / Cr Cb level +/-0.35 V, 75 ohm / sync.negative 0.3 V or 3-state +/-0.3 V on Y) / RGB Video (0.7 Vp-p, 75 ohm / Mac 0.714 Vp-p, 75 ohm)
Input Terminal	Audio Signal	500 mVrms / 47 k-ohm
	Video	Composite Video: RCA (Yellow) x 1 S-Video: Mini DIN Component Video: D-sub 15pin Blue moulding (in common with Analogue RGB connector) RGB Video: D-sub 15pin Blue moulding (in common with Analogue RGB connector)
	Audio	RCA x 1 (White/Red) (in common with Analogue RGB Audio terminal)
Control I/O	USB I/O	I/O Terminal Type B x1 (for K/B, control) I/O Speed Ver. 1.1
Operating Temperature	5 °C to 35 °C <41 °F to 95 °F> (20%-80% Humidity)	
Operating Altitude	0 m to 2286 m<0 ft to 7500 ft> (over 1500 m / 4,921 ft :with High altitude mode)	
Direct Power On	Yes	
Start-up Period	about 5 seconds warm-up period: 30 seconds	
Cool-down Period	Instant off	
Theft Proof	Yes	
Padlock & Security Cable Hole	Yes	
Kensington Lock	Yes	
Power Supply Voltage	100 - 240 V AC ±10%, 50/60 Hz	
Power Consumption	Lamp On	231 W
	Standby	5.8 W
Dimensions	Exclude Feet (D x W x H)	245 x 327 x 92 mm
	Maximum Dimension (D x W x H)	245 x 327 x 108 mm
	Weight	Approx. 6.0 € bs. / 2.7kg
Fan Noise	High Brightness Mode	35 dB
	Low Brightness Mode	28 dB
Supplied Accessories	Power Cable 1.8m Computer Cable 1.8 m D-sub 15pin (Male) - D-sub 15pin(Male) Remote Control Battery Manganese dry cell x2 Password Protect Sticker User's Manual Set	
Optional Accessories	Spare Lamp	ELPLP41
	Air Filter Set	ELPAF13
	Soft Carrying Case	ELPKS16B
	50" Portable Roll Screen	ELPSC06
	60" Portable Roll Screen	ELPSC07
	80" Portable Roll Screen	ELPSC08
	100 Type Screen Computer Cable,1.8m	ELPSC10 ELPKC02
	Computer Cable, 3.0m	ELPKC09
	Computer Cable, 20.0m	ELPKC10
	Component Video Cable, 3.0m	ELPKC19
	HD-TV Cable, 3.0m	ELPKC22
	Ceiling Mount Ceiling Plate	ELPMB18 ELPFC03
	Pipe 370mm	ELPFP04
	Pipe 570mm	ELPFP05
	Pipe 770mm	ELPFP06
Warranty	UK: 3 year next business day on-site repair or replace Republic of Ireland: 3 year next business day on-site repair or loan Errors and omissions excepted, all specifications are subject to change without notice.	